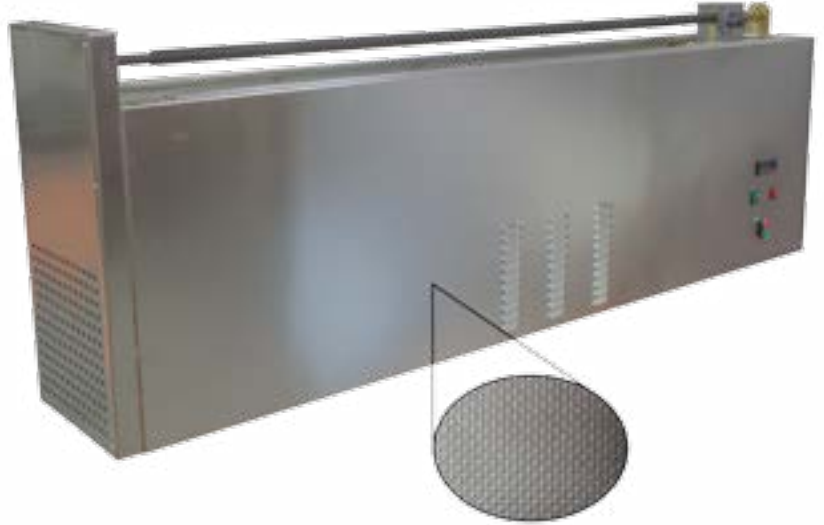


DUCTILITY TESTER (A-440) ASTM D113 • AASHTO T-51

- Used to determine the ductility of a bituminous materials by measuring the distance to which it will elongate before breaking when two ends of a briquet specimen of the material are pulled apart at a specified speed and temperature.
- Unless otherwise specified, the test shall be made at a temperature of $25^{\circ}\text{C} \pm 0.5^{\circ}\text{C}$ and with a speed of $50 \text{ mm/min} \pm 5.0 \%$.
- The internal bath and external body are made of stainless steel, with double wall fiberglass insulation.
- Equipped with thermoregulator to maintain the test temperature during the test.
- In hot areas, upon request, refrigerating unit can be also equipped with the machine (A-440/CU).
- Equipped with circulation motor used to maintain a constant temperature.
- Supplied with ductility mould and plate (set of 2).



SUPPLIED WITH

- Ductility Mould (A-440/M)

TECHNICAL SPECIFICATIONS

- Digital Thermostat & Indicator
- Interior Stainless Steel
- Power Supply: 220 - 240 V / 50 or 60 Hz (110 V / 60 Hz is also available)



Ductility Mould (A-440/M)