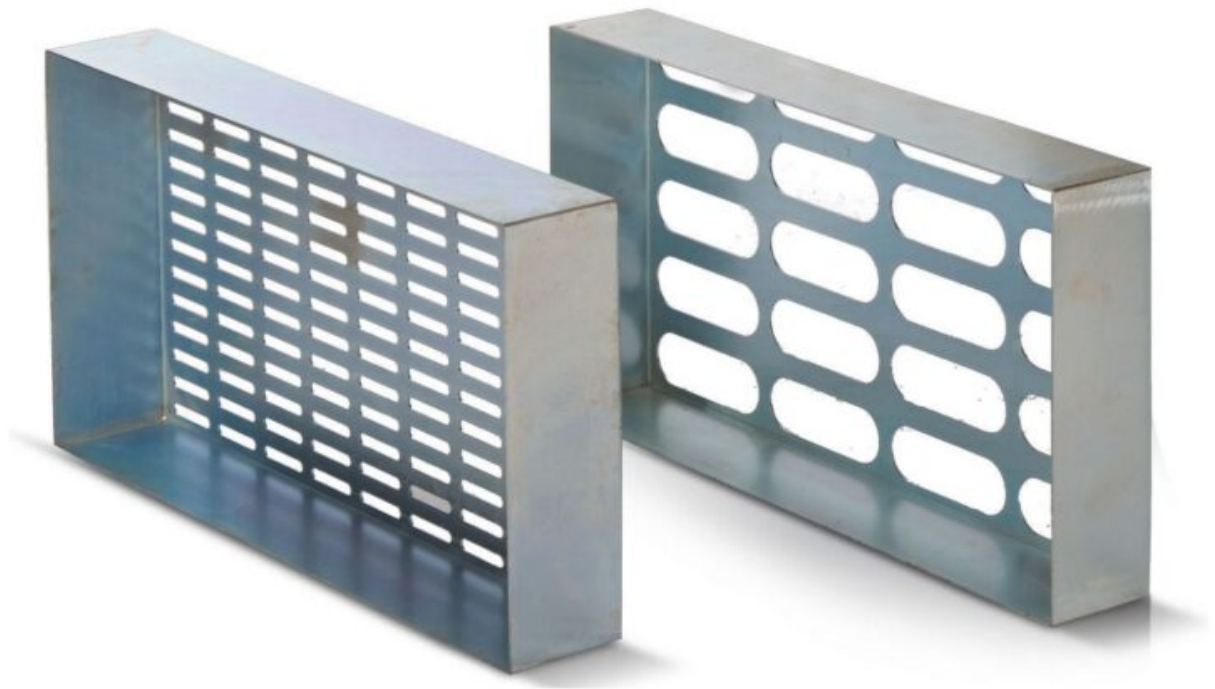


# FLAKINESS SIEVE SET (R030)

Category: Aggregate



**Product Code:** R030

**Category:** AGGREGATE

**Sub-Category:** PARTICLE SHAPE

- 
- Used to determine if the aggregate particles are classified as flaky or not, when they have a thickness (smallest dimension) of less than 0.6 of their mean sieve size, this size

being taken as the mean of the limiting sieve apertures used for determining the size fraction in which the particle occurs.

- The flakiness index of an aggregate sample is found by separating the flaky particles and expressing their mass as a percentage of the mass of the sample tested.
- The test cannot be used for material that either passes through a 6.30 mm test sieve or is held back by a 63.0 mm test sieve.
- Each sieve is made of heavy-gauge steel to the dimensions specified in the standard.
- Sieves can be purchased individually or as a set.

---

## **STANDARDS**

BS 812-105

## **ORDERING INFORMATION**

Code	Item
R 030 X00X H	FLAKINESS SIEVE SET
R 030 P001 H	FLAKINESS SIEVE - 4.9 x 30 mm
R 030 P002 H	FLAKINESS SIEVE - 7.2 x 40 mm
R 030 P003 H	FLAKINESS SIEVE - 10.2 x 50 mm
R 030 P004 H	FLAKINESS SIEVE - 14.4 x 60 mm
R 030 P005 H	FLAKINESS SIEVE - 19.7 x 80 mm
R 030 P006 H	FLAKINESS SIEVE - 26.3 x 90 mm
R 030 P007 H	FLAKINESS SIEVE - 33.9 x 100 mm

---

*Keywords:*